

Pascoe Vale Concrete Repairs

December 2016

KEY WORKS – Concrete Repair

SCOPE OF WORKS –

Repair was needed to spalled areas on concrete beams at a Pascoe Vale church.

Central Remedial's solution was to break out the spalled and damaged concrete, and repair the area using a non-shrink repair mortar.

WORKS UNDERTAKEN –

- Breakout of old repair
- Application of repair mortar

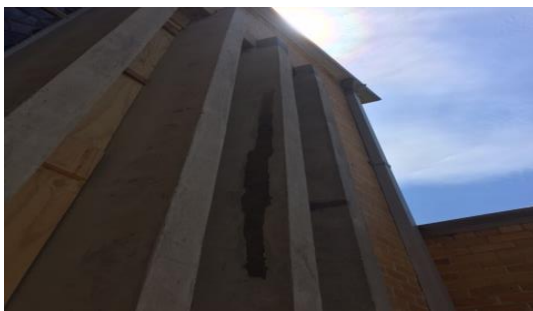
SITE PHOTOS –



Concrete Beams



Forming large repair



Other repair areas



Finishing large repair